

PAPERMINT

by MERCADIER[®]édition

TECHNICAL SHEET

Update 07/06/2018

“L’EXTRA”

PRODUCT DESCRIPTION

Polyurethane lacquer in aqueous phase, velvet, satiny, washable and resistant to most scratches. Microporous, very covering and resistant. Exceptional finish, high washability.

- Inside and Outside
- Very strong covering and filling power (be careful some colors require 3 layers)
- Very good hold
- Washable
- Very easy job
- Odorless

APPLICATION DOMAIN

- Damp room, Kitchen
- Wood
- Final layer for metal

PREPARATION OF THE SURFACE

Do not neglect the preparation of the surface. This is an essential stage for a perfect realization of your finishing paint and to ensure its longevity.

Remove all dirt, including limestone, from the affect surface with a suitable cleaning product. Then, rinse and let dry. Completely eliminate removed or la peinture cracked paint from this surface by scraping or sandblasting. Remove all traces of grease and oil with a water-based degreaser.

Supports must be prepared in accordance with DTU 59.1. to which must be added the next specific preparation: funds must be sound, dry, consistent and specific to the application.

Our advice:

Select Primary adapted according to the chosen finish hue:

- Grey: Granite indigo, Musa vert, Jungle bleu canard, Jungle bleu canard indigo, 1925 gris anthracite, 1925 gris anthracite intense, Bleu PaperMint, Farsi, Malossol, Mazarin, Opium, Prince, Rigoletto, Velvet.
- Yellow: Alice, Nachos, Romanesco, Star fruit, Toffee, Tatin, Berthe, Rio Dulce.
- Pink: Bravo !, Calypso, Cocorico, Geronimo, Karma, Kir, Pitaya, Tangerine, Tsar, Bourke.
- White: Waves gris perle, Waves gris souris, Granite céladon, Granite rose saumon, Musa rose, Tiles ivoire, Tiles bleu pétrole, Daisy vert, Jungle vert d’eau, Jungle sable, Jungle blanc craie,

1925 beige, Blanc papier, other hues.

WOOD

Sand the wood and entirely clean the surface. The holes and imperfections can be sealed with wood filler. It is advisable to apply a coat of primer "Accroche" before starting to paint.

ALUMINIUM AND STEEL / METALS NONFERROUS

Eliminate all traces of oil and grease with a concentrated degreaser. For corrosion marks, it is better to use sanding paper, fiberglass or other similar material. Apply a coat of primer "Accroche" before achieve the finish with "L'Extra".

SMOOTH SURFACE

Eliminate all traces of oil and grease with a concentrated degreaser. Sand lightly and apply a coat of primer "Accroche".

MOULD

Eliminate mold with a water-based bleach solution (1/3). Rub the affected areas with this solution. Let it take for 10 minutes. Rinse, then, the surface with water. Then, let it dry completely before beginning to paint. Do not add detergent or ammonia to the solution. Other support : contact us

IMPLEMENTATION

Before painting, follow the recommendations concerning the preparation of the surface. Apply the paint with a brush, roller or paint sprayer in two layers minimum. It is not normally necessary to dilute the paint (max 10%). Do not paint in direct exposure to the sun. Use the paint at temperatures included between 6 °C and 34 °C. It is better to restore the old painted surfaces locally. Between the application of the different layers, it is best to sand the raised wood fibers with fine grain sandpaper in order to ensure a well smooth surface.

FORMATS AND YIELD

"L'Extra" is available in 0,5l, 1l*, 2,5 liters

*Colors **not available** in 1 liter: Farsi, Nachos, Opium, Pitaya

Theoretical yield: 10 to 12 m²/l

Drying time: Out of dust: 1 hour

For use with the Airless:

Airless pressure: 100 - 130 bar

Tip: 0,011" - 0,013"

Angle: 25° - 40°

No dilution is necessary.

Our advice:

- The hiding power can vary according to the impression of the nature of the support and the color.
- Some sustained colors may require a 3rd coat for perfect rendering.
- To limit «picks», paint «crossing» starting from the dry support area and ending with the area just painted.

CLEANING

Rinse hands immediately and rinse tools with water and soap after use.

CHARACTERISTICS

Basic data for a white paint at 20 °C

Density: 1,31 g/cm³

Extract dry volumetric: +/- 36 % du volume

Recommended thickness dry film: 43 micromètres

Recommended thickness humid film: 120 micromètres

Storage: Keep in a fresh place and its original packaging: min. 12 months

CONDITION OF APPLICATION

Temperatures: > 3°C, < 50 °C (air, surface and material)

Relative humidity: 85 % maximum

HEALTH AND SAFETY

Do not leave within the reach of children.

Volatile Organic Compounds (VOC):

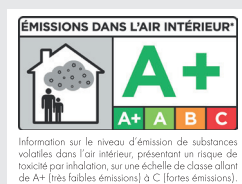
- **VOC content:** This paint contains little VOC.

Exposure limit value according to Directive 2010/79/EU: Class D: 130g/L

This product contains max 130g/L

- **VOC emissions:** in accordance with the new French regulation which imposes limit values of the rate of VOC (Volatile Organic Compounds), present in the products of construction this product Mercadier respects the environment. This regulation imposes that the construction and decoration products must be provided with a label indicating in a simple and readable, their emission level of volatile pollutants (VOC). We have the pleasure to confirm that this product is A+.

Product in aqueous phase not subject to labelling.



Safety data: contact us.

The information contained in this document is indicative and may not be provide a description appropriate to the nature and condition of the funds to be processed.

• Le showroom PaperMint •

36, Rue Paul Séward 75009 Paris • France •

+33 9 87 01 56 95

commande@paper-mint.fr – paper-mint.fr

Instagram : @papermint_paris – Facebook : /papermintparis