

# PAPERMINT

by MERCADIER<sup>®</sup>édition

## TECHNICAL SHEET

Update 07/04/2018

---

### “IMPRESSION”

#### PRODUCT DESCRIPTION

Insulation undercoat in aqueous phase for walls and ceilings.

- Inside
- Exceptional coverage power
- Isolation of absorption differences
- Homogenize funds
- Good fluidity
- Very easy job
- Excellent holding
- High efficiency
- Recoatable with any type of paint
- Odorless
- Available in 4 hues (white grey, pink, yellow) according to the finish color

#### APPLICATION DOMAIN

- Plaster and plaster derivatives
- Cardboard plasterboard / plaster tiles
- Supports based on hydraulic binders (cement, concrete, cement coating)
- Brick
- Canvas to paint

#### PREPARATION OF THE SURFACE

Do not neglect the preparation of the surface. This is an essential stage for a perfect realization of your finishing paint and to ensure its longevity.

Remove all dirt, including limestone, from the affect surface with a suitable cleaning product. Then, rinse and let dry. Remove all traces of grease and oil with a water-based degreaser. Smooth surfaces should be sanded. There must be no presence of rust.

Supports must be prepared in accordance with DTU 59.1. to which must be added the next specific preparation: funds must be sound, dry, consistent and specific to the application.

#### PLASTER AND PLASTER DERIVATIVES

Allow the plaster to dry for at least 30 days. Eliminate all superfluous plaster and other foreign bodies.

#### CONCRETE, CEMENT, BRICK

Before painting, remove all the bumps, dirt and dust.

## **OLD PAINT**

Scrub and brush in such a way as to eliminate non-adherent parts of the support.

Recoat, smooth and sand if necessary.

Other support: contact us

## **IMPLEMENTATION**

Follow the recommendations concerning the preparation of the surface before painting. Apply the "Impression" in one coat with a brush, roller or paint sprayer. It is not normally necessary to dilute the paint (max 10%). Do not paint in direct exposure to the sun. Use the paint at temperatures included between 6 °C and 34 °C.

**Theoretical yield:** 8 to 12 m<sup>2</sup>/l

**Drying time:** Out of dust: 1 hour

For use with the Airless:

Airless pressure: +/- 10 MPa (= 100 atm.)

Tip: 0,011" - 0,013"

It is not normally necessary to dilute the paint (max 10%).

### **Our advice:**

Select "L'Impression Mercadier" adapted according to the chosen finish hue:

- Grey: Granite indigo, Musa vert, Jungle bleu canard, Jungle bleu canard indigo, 1925 gris anthracite, 1925 gris anthracite intense, Bleu PaperMint, Farsi, Malossol, Mazarin, Opium, Prince, Rigoletto, Velvet.
- Yellow: Alice, Nachos, Romanesco, Star fruit, Toffee, Tatin, Berthe, Rio Dulce.
- Pink: Bravo !, Calypso, Cocorico, Geronimo, Karma, Kir, Pitaya, Tangerine, Tsar, Bourke.
- White: Waves gris perle, Waves gris souris, Granite céladon, Granite rose saumon, Musa rose, Tiles ivoire, Tiles bleu pétrole, Daisy vert, Jungle vert d'eau, Jungle sable, Jungle blanc craie, 1925 beige, Blanc papier, other hues.

## **CLEANING**

Rinse hands immediately and rinse tools with water and soap after use.

## **CHARACTERISTICS**

Basic data for a white paint at 20 °C

Density: 1,45 g/cm<sup>3</sup>

Extract dry weight: +/- 61 % of the mass

Extract dry volumetric: +/- 47 % of the volume

Recommended thickness dry film: 70 micrometers

Recommended thickness humid film: 150 micrometers

**Storage:** Keep in a fresh place and its original packaging: min. 12 months

## **CONDITION OF APPLICATION**

Temperatures: > 3°C, < 50 °C (air, surface and material)

Relative humidity: 85 % maximum

## HEALTH AND SAFETY

Do not leave within the reach of children.

### Volatile Organic Compounds (VOC):

- **VOC content:** This paint contains little VOC.

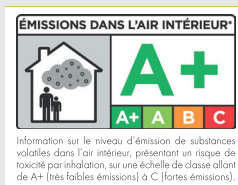
Exposure limit value according to Directive 2010/79/EU: Class A: 30g/L

This product contains max 30 g/L

- **VOC emissions:** In accordance with the new French regulation which imposes limit values of the rate of VOC (Volatile Organic Compounds), present in the products of construction this product Mercadier respects the environment. This regulation

imposes that the construction and decoration products must be provided with a label indicating in a simple and readable, their emission level of volatile pollutants (VOC). We have the pleasure to confirm that this product is A +.

Product in aqueous phase not subject to labelling.



**Safety data:** contact us.

The information contained in this document is indicative and may not be provide a description appropriate to the nature and condition of the funds to be processed.

### • Le showroom PaperMint •

36, Rue Paul Sépard 75009 Paris · France ·

+33 9 87 01 56 95

commande@paper-mint.fr – paper-mint.fr

Instagram : @papermint\_paris – Facebook : /papermintparis