

PAPERMINT

by MERCADIER[®]édition

TECHNICAL SHEET

Uptade 07/06/2018

“LE MAT”

PRODUCT DESCRIPTION

Ultra matte paint in aqueous phase for walls, ceilings and rooms to live, based on an acrylic dispersion.

- Inside / Outside
- Ultra matte appearance
- Very easy job
- Almost odorless
- Resistant to water
- Breathable
- No yellowing

APPLICATION DOMAIN

- Plaster and plaster derivatives / Plasterboard and plaster tiles
- Panels concrete, cement, wood
- Cement plaster / Brick
- Tapestry
- Old layers of paint

PREPARATION OF THE SURFACE

Do not neglect the preparation of the surface. This is an essential stage for a perfect realization of your finishing paint and to ensure its longevity. Remove all dirt, including limestone, from the affect surface with a suitable cleaning product. Then, rinse and let dry. Completely eliminate removed or la peinture cracked paint from this surface by scraping or sandblasting. Remove all traces of grease and oil with a water-based degreaser.

Supports must be prepared in accordance with DTU 59.1. to which must be added the next specific preparation: funds must be sound, dry, consistent and specific to the application.

Our advice:

Select Primary adapted according to the chosen finish hue:

- Grey: Granite indigo, Musa vert, Jungle bleu canard, Jungle bleu canard indigo, 1925 gris anthracite, 1925 gris anthracite intense, Bleu PaperMint, Farsi, Malossol, Mazarin, Opium, Prince, Rigoletto, Velvet.
- Yellow: Alice, Nachos, Romanesco, Star fruit, Toffee, Tatin, Berthe, Rio Dulce.
- Pink: Bravo !, Calypso, Cocorico, Geronimo, Karma, Kir, Pitaya, Tangerine, Tsar, Bourke.

- White: Waves gris perle, Waves gris souris, Granite céladon, Granite rose saumon, Musa rose, Tiles ivoire, Tiles bleu pétrole, Daisy vert, Jungle vert d'eau, Jungle sable, Jungle blanc craie, 1925 beige, Blanc papier, other hues.

PLASTER AND PLASTER DERIVATIVES

Allow the plaster to dry for at least 30 days. Apply a first coat of "Impression" primer on the plaster.

CONCRETE, CEMENT, BRICK

Before painting, remove all the bumps, dirt and dust. It is advisable to apply a first coat of "Impression" primer.

OLD PAINT

Entirely clean the surface with soap and water. Then rinse well and allow to dry. Apply a first coat of "Impression" primer if necessary.

WOODEN PANELS

All the wood must first be properly cleaned. Plaster all crevasses and holes with wood filler, then sand well. To avoid seepage of the wood, it is advisable to first apply a coat of primer "Accroche".

ALUMINIUM AND GALVANIZED STEEL

Eliminate all traces of grease and oil with a water-based degreaser. It is necessary to remove all corrosive marks with sandpaper, glass wool or other abrasive. Then, apply a coat of primer "Accroche".

Other support: contact us

IMPLEMENTATION

Follow the recommendations concerning the preparation of the surface before painting. 2 layers of "Mat" are sufficient on previously painted surfaces after preparation. For unpainted bases (mostly porous), it is advisable to first apply the primer ("Impression" or "Accroche") adequate to your support, then two layers of "Mat". Apply the paint with a brush, roller or paint sprayer. It is not normally necessary to dilute the paint (max 10%). Do not paint in direct exposure to the sun. Use the paint at temperatures included between 6 °C and 34 °C.

FORMATS AND YIELD

"Le Mat" is available in 500ml, 1l*, 2.5l, 5l**, 10 liters

*Colors **not available** in 1 liter : Farsi, Nachos, Opium, Pitaya

Colors **not available in 5 liters : Cari, Coron, Dodo, Farsi, Gallatin, Glagla, Isatis, Joker, Karma, Mazarin, Nachos, Opium, Pitaya, Rigoletto, Star Fruit, Tangerine

Theoretical yield: 7 to 14 m²/l

Drying time: Out of dust: 30 min - 1 hour

Hardening: 2 - 3 days

For use with the Airless:

Airless pressure: 150 - 180 bar

Tip: 0,021" - 0,027"

Angle: 50°

No dilution is necessary.

Our advice:

- The hiding power can vary according to the impression of the nature of the support and the color.

- Some sustained colors may require a 3rd coat for perfect rendering.
- To limit «picks», paint «crossing» starting from the dry support area and ending with the area just painted.

CLEANING

Rinse hands immediatly and rinse tools with water and soap after use.

CHARACTERISTICS

Basic data for a white paint at 20 °C

Density: 1,4 g/cm³

Extract dry weight: +/- 61 % of the mass

Extract dry volumetric: +/- 42 % of the volume

Recommended thickness dry film: 75 micromètres

Recommended thickness humid film: 150 micromètres

Storage: Keep in a fresh place and its original packaging: min. 12 months

CONDITION OF APPLICATION

Temperatures: > 3°C, < 50 °C (air, surface and material)

Relative humidity: 85 % maximum

HEALTH AND SAFETY

Do not leave within the reach of children.

Volatile Organic Compounds (VOC):

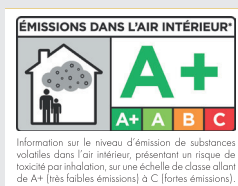
- **VOC content:** This paint contains little VOC.

Exposure limit value according to Directive 2010/79/EU: Classe A : 30g/L

This product contains max 30g/L

- **VOC emissions:** n accordance with the new French regulation which imposes limit values of the rate of VOC (Volatile Organic Compounds), present in the products of construction this product Mercadier respects the environment. This regulation imposes that the construction and decoration products must be provided with a label indicating in a simple and readable, their emission level of volatile pollutants (VOC). We have the pleasure to confirm that this product is A +.

Product in aqueous phase not subject to labelling.



Safety data: contact us.

The information contained in this document is indicative and may not be provide a description appropriate to the nature and condition of the funds to be processed.

• Le showroom PaperMint •

36, Rue Paul Sémard 75009 Paris · France ·

+33 9 87 01 56 95

commande@paper-mint.fr – paper-mint.fr

Instagram : @papermint_paris – Facebook : /papermintparis