

# PAPERMINT

by MERCADIER<sup>®</sup>édition

## TECHNICAL SHEET

Uptade 07/06/2018

---

### “LA PREMIUM“

#### PRODUCT DESCRIPTION

Acrylic paint very washable matte in aqueous phase for kitchen walls, entrance hall and bathroom with remarkable maintenance properties.

- Inside / Outside
- Extremely simple maintenance
- Very easy job
- Well matte paint film
- Exceptional coverage power
- More resistant to scratches
- Practically odorless

#### APPLICATION DOMAIN

- Plaster and plaster derivatives / Plasterboard
- Non-woven wallpaper
- Fibreglass
- Concrete, cement, brick
- Old layers of paint

#### PREPARATION OF THE SURFACE

Do not neglect the preparation of the surface. This is an essential stage for a perfect realization of your finishing paint and to ensure its longevity.

Remove all dirt, including limestone, from the affect surface with a suitable cleaning product. Then, rinse and let dry. Completely eliminate removed or la peinture cracked paint from this surface by scraping or sandblasting. Remove all traces of grease and oil with a water-based degreaser.

Supports must be prepared in accordance with DTU 59.1. to which must be added the next specific preparation: funds must be sound, dry, consistent and specific to the application.

#### Our advice:

Select Primary adapted according to the chosen finish hue:

- Grey: Granite indigo, Musa vert, Jungle bleu canard, Jungle bleu canard indigo, 1925 gris anthracite, 1925 gris anthracite intense, Bleu PaperMint, Farsi, Malossil, Mazarin, Opium, Prince, Rigoletto, Velvet.
- Yellow: Alice, Nachos, Romanesco, Star fruit, Toffee, Tatin, Berthe, Rio Dulce.

- Pink: Bravo !, Calypso, Cocorico, Geronimo, Karma, Kir, Pitaya, Tangerine, Tsar, Bourke.
- White: Waves gris perle, Waves gris souris, Granite céladon, Granite rose saumon, Musa rose, Tiles ivoire, Tiles bleu pétrole, Daisy vert, Jungle vert d'eau, Jungle sable, Jungle blanc craie, 1925 beige, Blanc papier, other hues.

### **PLASTER AND PLASTER DERIVATIVES**

Allow the plaster to dry for at least 30 days. Apply a first coat of "Impression" primer on the plaster.

### **CONCRETE, CEMENT, BRICK**

Before painting, remove all the bumps, dirt and dust. It is advisable to apply a first coat of "Impression" primer.

### **OLD PAINT**

Entirely clean the surface with soap and water. Then rinse well and allow to dry. Apply a primer if necessary.

### **WOODEN PANELS**

All the wood must first be properly cleaned. Plaster all crevasses and holes with wood filler, then sand well. To avoid seepage of the wood, it is advisable to first apply a coat of primer "Accroche".

### **ALUMINIUM AND GALVANIZED STEEL**

Eliminate all traces of grease and oil with a water-based degreaser. It is necessary to remove all corrosive marks with sandpaper, glass wool or other abrasive. Then, apply a coat of primer "Accroche".

Other support: contact us

### **IMPLEMENTATION**

Follow the recommendations concerning the preparation of the surface before painting. 2 layers of "Premium" are sufficient on previously painted surfaces after cleaning and sanding. For unpainted bases, it is advisable to first apply the appropriate "Impression" or "Accroche" primer to your substrate, then two layers of "Premium". Apply the paint with a brush, roller or paint sprayer. It is not normally necessary to dilute the paint (max 10%). Do not paint in direct exposure to the sun. Use the paint at temperatures included between 6 °C and 34 °C.

### **FORMATS AND YIELD**

"La Premium" is available in 1l\*, 2.5l, 5l\*\*, 10 liters

\*Colors **not available** in 1 liter: Farsi, Nachos, Opium, Pitaya

\*\*Colors **not available** in 5 liters: Cari, Coron, Dodo, Farsi, Gallatin, Glagla, Isatis, Joker, Karma, Mazarin, Nachos, Opium, Pitaya, Rigoletto, Star Fruit, Tangerine

**Theoretical yield:** 8 to 12 m<sup>2</sup>/l

**Drying time:** Out of dust: 1 hour

For use with the Airless:

Airless pressure: 150 bars

Tip: 0,018" - 0,021"

Angle: 40 - 50°

Pressure: 16,5 MPa (165 atm.)

Dilution of 10% max.

### **Our advice:**

- The hiding power can vary according to the impression of the nature of the support and the color.

- Some sustained colors may require a 3rd coat for perfect rendering.
- To limit «picks», paint «crossing» starting from the dry support area and ending with the area just painted.

## CLEANING

Rinse hands immediatly and rinse tools with water and soap after use.

## CHARACTERISTICS

Basic data for a white paint at 20 °C

Extract dry volumetric: +/- 44 % du volume

Thickness: +/- 1,4 g/L

Recommended thickness humid film: 150 micromètres

**Storage:** Keep in a fresh place and its original packaging: min. 12 months (between 5 °C and 40 °C).

## CONDITION OF APPLICATION

Temperatures: > 3°C, < 50 °C (air, surface and material)

Relative humidity: 85 % maximum

## HEALTH AND SAFETY

Do not leave within the reach of children.

### Volatile Organic Compounds (VOC):

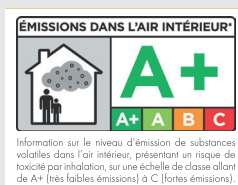
- **VOC content:** This paint contains little VOC.

Exposure limit value according to Directive 2010/79/EU: Classe A: 30g/L

This product contains max 30g/L

- **VOC emissions:** In accordance with the new French regulation which imposes limit values of the rate of VOC (Volatile Organic Compounds), present in the products of construction this product Mercadier respects the environment. This regulation imposes that the construction and decoration products must be provided with a label indicating in a simple and readable, their emission level of volatile pollutants (VOC). We have the pleasure to confirm that this product is A +.

Product in aqueous phase not subject to labelling.



**Safety data:** contact us.

The information contained in this document is indicative and may not be provide a description appropriate to the nature and condition of the funds to be processed.

### • Le showroom PaperMint •

36, Rue Paul Sémard 75009 Paris · France ·

+33 9 87 01 56 95

commande@paper-mint.fr – paper-mint.fr

Instagram : @papermint\_paris – Facebook : /papermintparis